



MEET Beyond London
 INSPIRING MEETING & EVENT VENUES
 ACROSS SOUTH EAST ENGLAND: READING

12 Month Website Stats

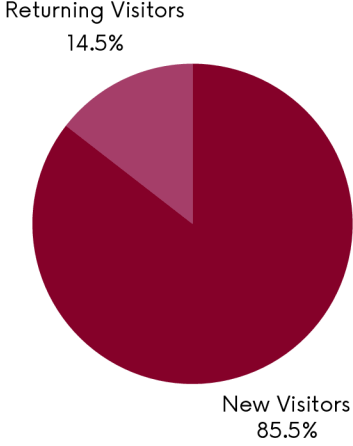
29,727
Page Views

5m 13s
Av Time on Site

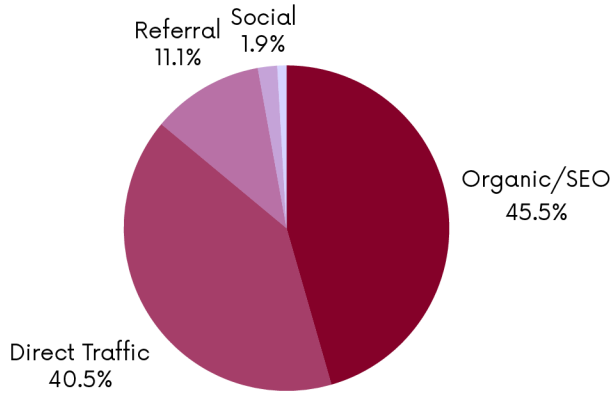
1600
Unique Users

www.meetbeyondlondon.com

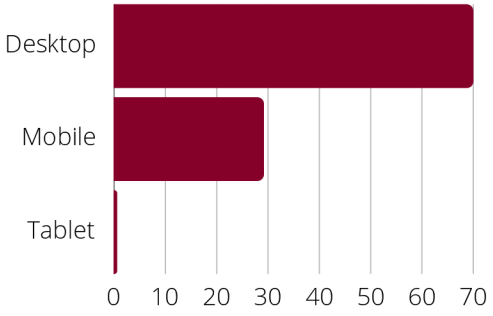
New vs Returning



Traffic Sources



User Device Breakdown



Top 5 Themed Pages

- MEET Beyond London home page
- Christmas Party Venues
- Unique & Unusual Venues
- Venues by Capacity Search
- 150+ Conference Hotels

2025 Campaign Priorities

Our primary objectives for 2025 revolve around boosting our returning visitor traffic while adding new trending themes including sustainability and well-being. We will also grow our traffic using a small but targeted paid-for Meta ad campaign.

Data April 24 - March 2025. Updated March 2025 - source google analytics



MEET Beyond London

INSPIRING MEETING & EVENT VENUES
ACROSS SOUTH EAST ENGLAND: READING

Newsletter Statistics and Breakdown

5,477

Contacts

19.09%

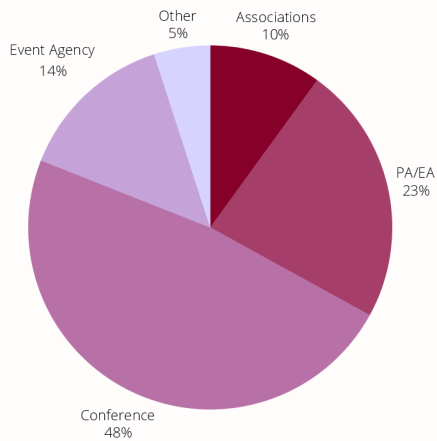
Av. Open Rate

8%

Click-to-Open Rate

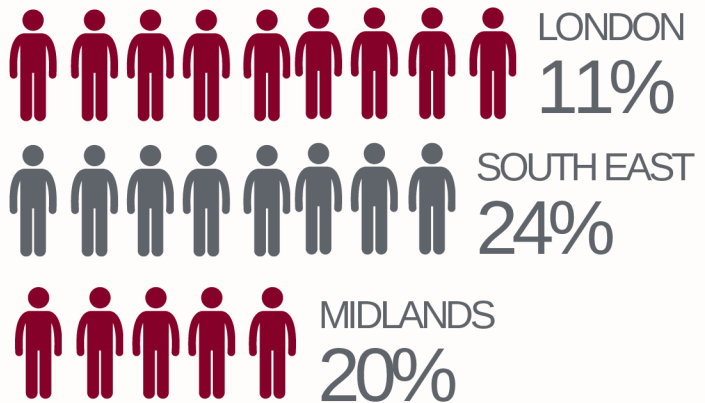
**Industry benchmark: 20% open rate | 8.7% click to open. [more info](#)

Category Breakdown



Geographic Breakdown

For those that have provided information



E-news Schedule



- > [View upcoming theme & schedule](#)
- > [View examples](#)

A synopsis of job titles

Event Director Head of Events
 Venue Sourcing Executive Executive PA to CEO
 PA to the Executive Board Director of Operations
 Events & Marketing Manager Personal Assistant
 Marketing & Events Executive Executive Assistant
 Director of Purchasing Deputy Head of Conference
 Support Co-ordinator Company Secretary

GET IN TOUCH

For more information about becoming a campaign partner visit

www.tourismsoutheast.com/meet-beyond-london

Contact Elaine or Jane. 02380 625400 ecolley@tourismse.com jchiver@tourismse.com



MEET Beyond London

INSPIRING MEETING & EVENT VENUES
ACROSS SOUTH EAST ENGLAND: READING

Social Media Reach



2,689 1,085 84,455 3,453

followers

posts

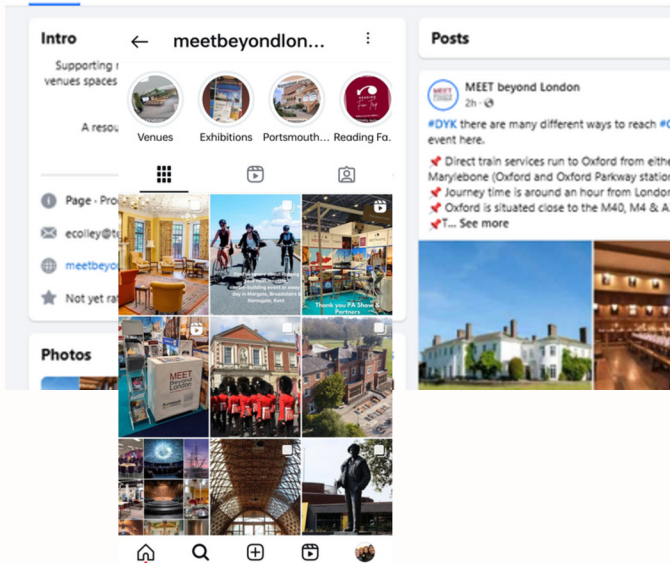
reach

engagement



MEET Beyond London ... · 27 Feb ·
Day two of the @pashowuk at London Excel. Some new faces from @MaryRoseMuseum and @NatMuseumRN #Portsmouth joining us today, alongside #reading partners @RoseateReading and @VenueReading. Looking forward to a busy day.

#venues #outsidelondon



MEET Beyond London's Post

MEET Beyond London
388 followers
2y

Maidstone is set in the heart of the 'Gard world away from the office.

Surrounded by beautiful countryside and right next to the River Medway, Maidstone nestles at the foot of the North Downs.

The town is also well known as the 'nightlife' capital of the county, with its theatre, bars, restaurants and clubs so your delegates can kick back and relax after the day's business.

#businessconference #meetingvenue #businessvenue #b2b #businessevent #event #events #eventprofs #meetupprofs #eventplanning #meetingplanners #nice #meeting



More from this author

Reading! New meetings location at the end of the Elizabeth Line
MEET Beyond London · 2y

- Explore topics**
- Sales
 - Marketing
 - IT Services
 - Business Administration
 - HR Management
 - Engineering
 - Soft Skills
 - See All

GET IN TOUCH

For more information about becoming a campaign partner visit www.tourismsoutheast.com/meet-beyond-london

Contact Elaine or Jane. 02380 625400 ecolley@tourismse.com jchiver@tourismse.com